



# Hicks Airport (T67)

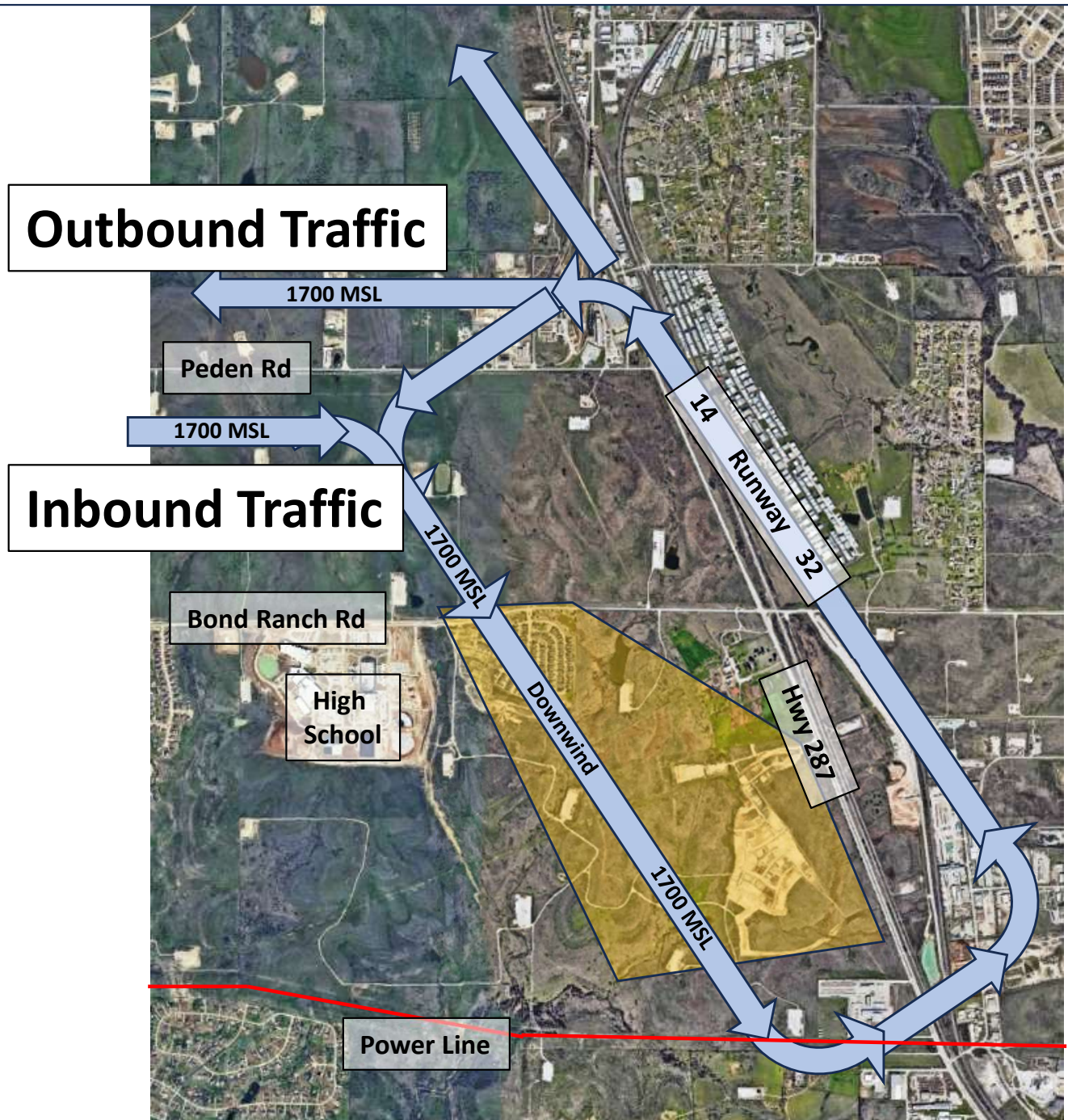
*Protect Hicks*  
*Fly Safely & Quietly*


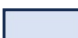
## Best Pattern Practices

CTAF 123.05 Elevation 855' Runway Direction 14/32 Runway Length 3740'

### Runway 32 "Peden Road" Approach/Departure

- North and West DEPARTURES should maintain runway heading for ½ mile then proceed straight out or turn left and remain North of PEDEN ROAD at 1700MSL until reaching Eagle Mountain Lake (EML). Then proceed on course and altitude at pilots' discretion. Note: BEBEW (GPS fix) is coincident with the West end of PEDEN ROAD near EML. If remaining in the pattern turn downwind only after achieving 1700MSL.
- North and West ARRIVALS to runway 32 should remain South of and parallel to PEDEN ROAD until entering the LEFT downwind to Runway 32



 Noise Sensitive Area  
 Departures and Arrivals





*Protect Hicks  
Fly Safely & Quietly*

## Best Pattern Practices

|             |                |                        |                     |
|-------------|----------------|------------------------|---------------------|
| CTAF 123.05 | Elevation 855' | Runway Direction 14/32 | Runway Length 3740' |
|-------------|----------------|------------------------|---------------------|

- North and West DEPARTURES should maintain runway heading until reaching the POWER LINE (1NM) then turn right and head West. Maintain 1700 MSL and parallel the South side of the POWER LINE until reaching Eagle Mountain Lake (EML). Then proceed on course and altitude and pilots' discretion. Maintain 1700 MSL until EML is important because Military aircraft approaching KNFW will be at 2700 MSL descending into its Class D airspace (EML dam)
- North and West ARRIVALS to runway 14 should remain North of the POWER LINE and proceed to the EML HIGH SCHOOL to enter RIGHT downwind runway 14

